

Stocksales

cash only

April 2010

VOKA Kamer van Koophandel
Antwerpen-Waasland



FFI
FLANDERS FASHION INSTITUTE
BY FLANDERS DC

MEER INFO

Agnes Wené

Project Manager

FLANDERS FASHION INSTITUTE

Nationalestraat 28/2 - 2000 Antwerp

T: +32 3 226 14 47

F: +32 3 232 63 96

aw.ffi@modenatie.com

www.ffi.be

Kim Mampaey

Projectcoördinator Innovatie Bovenlokale Retail

Voka – Chamber of Commerce and Industry Antwerpen-Waasland

Markgravenstraat 12 - 2000 Antwerp

T: +32 3 232 22 19

F: +32 3 233 64 42

kim.mampaey@voka.be

www.voka.be/antwerpen-waasland

STAD ANTWERPEN

Met steun van de Vlaamse overheid



Vlaanderen In Actie



met steun van het Agentschap Ondernemen

1. DELVAUX

Komedieplaats 17, 2000 Antwerp (Entrance Ketelstraat)

- Bags and accessories

23-24/04 Friday > Saturday from 10am-6pm

2. DRIES VAN NOTEN

Godefriduskaai 36, 2000 Antwerp

- Clothing and fabrics for men and women

21-25/04 Wednesday > Saturday from 1pm-6pm
Saturday > Sunday from 10am-5pm

3. TIM VAN STEENBERGEN

Gallery Theo, Sint Michielskaai 8-9, 2000 Antwerp

- Clothing, fabrics and accessories for men and women

21-25/04 Wednesday > Sunday from 10am-6pm

4. A.F. VANDEVORST

Indiëstraat 8, 2000 Antwerp

- Clothing, accessories, nightfall lingerie and shoes for men and women

21-24/04 Wednesday from 9am-6pm
Thursday from 10am-6pm
Friday from 10am-7pm
Saturday from 11am-6pm

5. STEPHAN SCHNEIDER

Oude Koornmarkt 58, 2000 Antwerp

- Clothing and fabrics

15-17/04 Thursday > Friday from 11am-7pm
Saturday from 11am-6pm

6. ANNELIES TIMMERMANS

Aalmoezenierstraat 28, 2000 Antwerp

- Bags

22-25/04 Thursday > Sunday from 11am-6pm

7. ANNEMIE VERBEKE

Emile Banningstraat 18, 2000 Antwerp

- Clothing and shoes for women

22-24/04 Thursday > Saturday from 10am-6pm

8. ANJA SCHWERBROCK

Kloosterstraat 175, 2000 Antwerp

- Clothing

21-25/04 Wednesday > Saturday from 11am-6pm
Sunday from 2pm-6pm

9. WALTER VAN BEIRENDONCK BIG

Henri van Heurckstraat 3, 2000 Antwerp

- Clothing

21-24/04 Wednesday > Saturday from 10am-6pm

10. RA

Kleine Markt 7-9, 2000 Antwerp

- Clothing

21-25/04 Wednesday > Sunday from 11am-7pm

11. FRIEDA DEGEYTER & SYLVIE FRANQUET

Maarschalk Gerardstraat 7, 2000 Antwerp

- Women clothing, jewellery, accessories and scarfs

23-24/04 Friday > Saturday from 11am-6pm

12. ANNA HEYLEN

Maison Anna Heylen, Lombardenstraat 16, 2000 Antwerp

- Women clothing

20-24/04 Tuesday > Saturday from 1pm-6pm

13. CHRISTIAN WIJNANTS & PELICAN AVENUE

Marnixplaats 7, 2000 Antwerp

- Clothing and fabrics

21-24/04 Wednesday from 6pm-10pm Opening drink (only clothing)
Thursday > Saturday from 10am-7pm

14. CHRISTOPH BROICH

Red Fish Factory, Helmstraat 139, 2140 Antwerp

- Clothing, accessories and fabrics for men and women

15-17/04 Thursday > Saturday from 10am-6pm
21-24/04 Wednesday > Saturday from 10am-6pm

15. ASSEMBLÉ

Piste 05, Kersbeekstraat 5, 2060 Antwerp

- Kids clothing

22-23/04 Thursday > Friday from 10am-8pm

16. BABYBOOM: ATELIER ASSEMBLÉ, AYMAR, ZORRA, JOSIE, LE FABULEUX MARCEL DE BRUXELLE, DANKOE & VRIENDEN, INGE VAN DEN BROECK, DOMINIQUE VER EECHE, MAX & LOLA, FUB CHILDRENSWEAR, CAROLINE MAMPAY, RITA CO RITA, DE HANDFABRIEK, FADIME TEZERDI, AAP NOOT MIES EN JOSIE

Atelier Solarshop, Dambruggestraat 48, 2060 Antwerp

- Kids clothing, accessories, fabrics and shoes

22-25/04 Thursday > Sunday from 11am-6pm

17. FASHION FARM 2010: DANIEL ANDRESEN, LENNY LELEU, ANNETTE KÖLLING, HUI HUI BY JOHANNA TRUDZINSKI, HELENA LUMELSKY, HARALD LIGTVOET, TI+HANN, ISABEL TESFAZGHI, KID VANILLA BY EVA BALG, SOKI CONCEPT, HANNE BEUTELS, PETER CEURSTERS, CINDY FARRINGTON, BALAGAN BY RAUL EGLOFF ALCAIDE, REAKTION BY ANDREA KRÄNZLIN

Designcenter | De Winkelhaak, Lange Winkelhaakstraat 26, 2060

Antwerp
24-25/04 Saturday > Sunday from 12am-8pm

18. ROMY SMITS

Showroom Camper, Offerandestraat 26, 2060 Antwerp

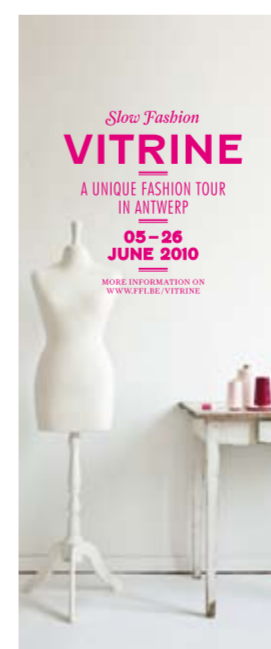
- Women clothing, accessories and pictures

24-25/04 Saturday > Sunday from 12am-8pm

19. ANN DEMEULEMEESTER & HAIDER ACKERMANN

Bvba 32, Populierenlaan 34, 2020 Antwerp

21-24/04 Wednesday from 10am-7pm
Thursday > Friday from 10am-6pm
Saturday from 10am-5pm



FFI
LANGE WINKELHAAK 26
ANTWERP
2010

- 1 DELVAUX
- 2 DRIES VAN NOTEN
- 3 TIM VAN STEENBERGEN
- 4 A.F. VANDEVORST
- 5 STEPHAN SCHNEIDER
- 6 ANNELIES TIMMERMANS
- 7 ANNEMIE VERBEKE
- 8 ANJA SCHWERBROCK
- 9 WALTER VAN BEIRENDONCK BIG
- 10 RA
- 11 FRIEDA DEGEYTER & SYLVIE FRANQUET
- 12 ANNA HEYLEN
- 13 CHRISTIAN WIJNANTS & PELICAN AVENUE
- 14 CHRISTOPH BROICH
- 15 ASSEMBLÉ
- 16 BABYBOOM
- 17 FASHION FARM 2010
- 18 ROMY SMITS
- 19 ANN DEMEULEMEESTER & HAIDER ACKERMANN

